

Zip Code: 80526



David Timm
 Broker Associate
 970 631 3226
 www.FortCollinsValues.com
 david@davidtimmhomes.com



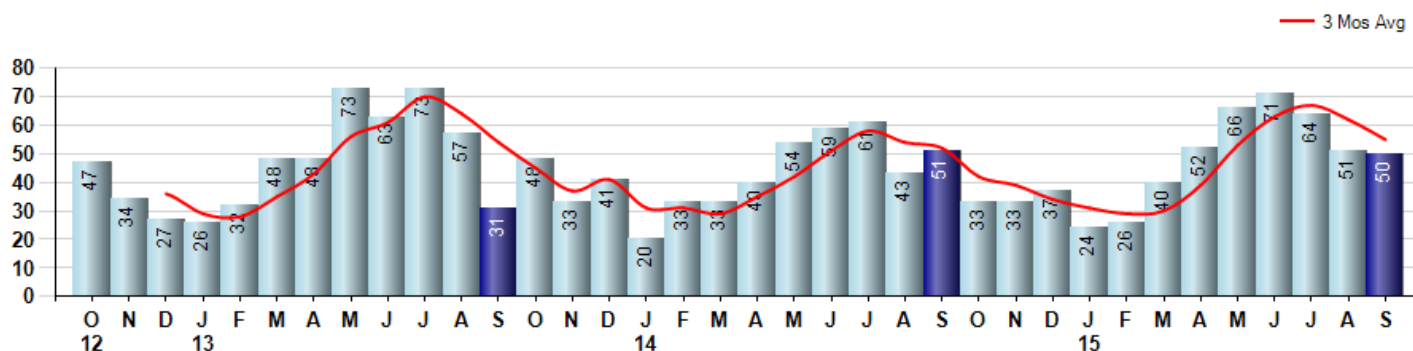
Price Range: \$0 to \$999,999,000 | Properties: Single Family Home

| Market Profile & Trends Overview | Month | Trending Versus*: | | | | Trending Versus*: | | |
|--|-----------|-------------------|-----|------|------|-------------------|----------|-----------|
| | | LM | L3M | PYM | LY | YTD | PriorYTD | PriorYear |
| Median List Price of all Current Listings | \$427,500 | -4% | | 3% | | | | |
| Average List Price of all Current Listings | \$467,313 | -4% | | 3% | | | | |
| September Median Sales Price | \$315,750 | 5% | -2% | 22% | 20% | \$310,000 | 19% | 17% |
| September Average Sales Price | \$333,624 | -3% | -6% | 5% | 13% | \$344,044 | 18% | 17% |
| Total Properties Currently for Sale (Inventory) | 62 | 11% | | 24% | | | | |
| September Number of Properties Sold | 50 | -2% | | -2% | | | 13% | |
| September Average Days on Market (Solds) | 17 | 113% | 21% | -29% | -29% | 14 | -39% | -42% |
| Asking Price per Square Foot (based on New Listings) | \$153 | 6% | 2% | 12% | 12% | \$150 | 10% | 10% |
| September Sold Price per Square Foot | \$150 | 1% | -1% | 10% | 12% | \$149 | 10% | 11% |
| September Month's Supply of Inventory | 1.2 | 13% | 15% | 27% | 6% | 1.0 | -21% | -18% |
| September Sale Price vs List Price Ratio | 100.3% | -0.5% | -1% | 2% | 1.3% | 101.0% | 2.1% | 2.0% |

* LM=Last Month / L3M=Last 3 Months / PYM=Same Month Prior Year / LY=Last Year / YTD = Year-to-date

Property Sales

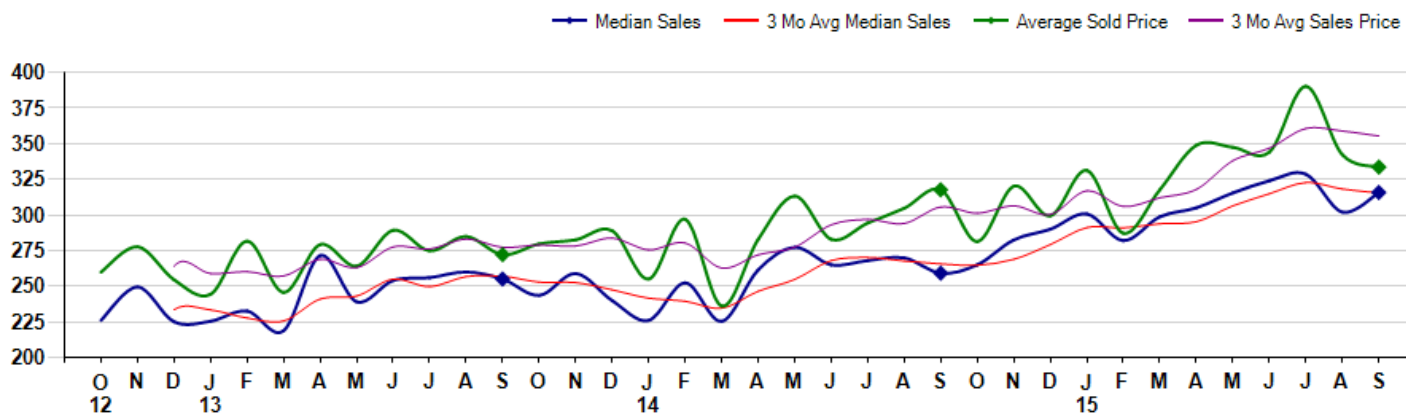
September Property sales were 50, down -2.0% from 51 in September of 2014 and -2.0% lower than the 51 sales last month. September 2015 sales were at a mid level compared to September of 2014 and 2013. September YTD sales of 444 are running 12.7% ahead of last year's year-to-date sales of 394.



Prices

The Median Sales Price in September was \$315,750, up 21.9% from \$259,100 in September of 2014 and up 4.6% from \$302,000 last month. The Average Sales Price in September was \$333,624, up 5.0% from \$317,643 in September of 2014 and down -2.5% from \$342,238 last month. September 2015 ASP was at highest level compared to September of 2014 and 2013.

Median means Middle (the same # of properties sold above and below Median) (000's)



© 2015 Coldwell Banker Real Estate LLC. All Rights Reserved. Coldwell Banker Residential Brokerage fully supports the principles of the Fair Housing Act and the Equal Opportunity Act. Coldwell Banker Residential Brokerage is operated by a subsidiary of NRT LLC. Coldwell Banker and the Coldwell Banker Logo are registered service marks owned by Coldwell Banker Real Estate LLC.

Based on information from Information and Real Estate Services LLC for the period 10/1/2012 through 9/30/2015. Due to MLS reporting methods and allowable reporting policy, this data is only informational and may not be completely accurate. Therefore, Coldwell Banker Residential Brokerage does not guarantee the data accuracy. Data maintained by the MLS's may not reflect all real estate activity in the market.



Zip Code: 80526



David Timm
 Broker Associate
 970 631 3226
 www.FortCollinsValues.com
 david@davidtimmhomes.com



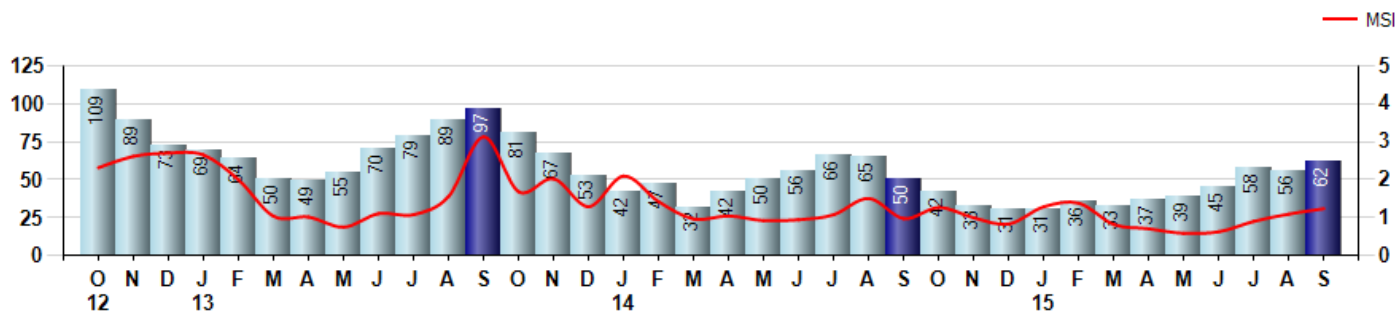
Price Range: \$0 to \$999,999,000 | Properties: Single Family Home

Inventory & MSI

The Total Inventory of Properties available for sale as of September was 62, up 10.7% from 56 last month and up 24.0% from 50 in September of last year. September 2015 Inventory was at a mid range compared to September of 2014 and 2013.

A comparatively lower MSI is more beneficial for sellers while a higher MSI is better for buyers. The September 2015 MSI of 1.2 months was at a mid range compared with September of 2014 and 2013.

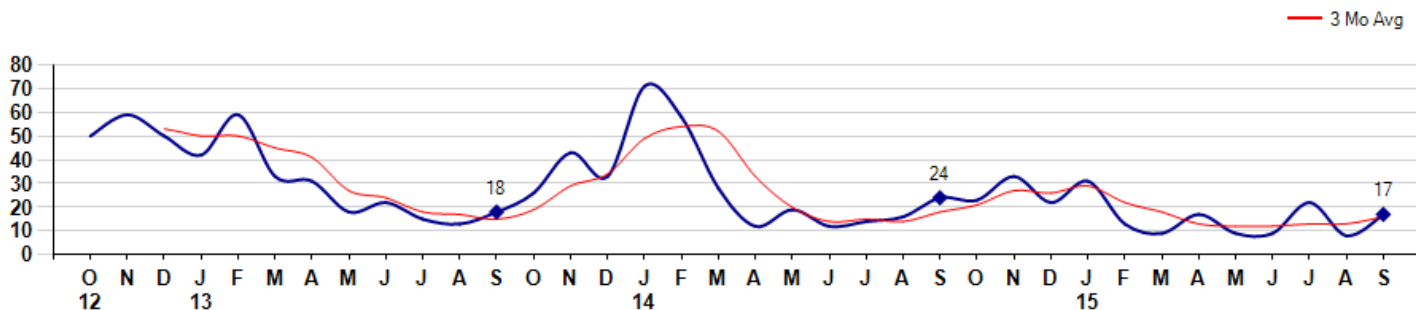
MSI is the # of months needed to sell all of the Inventory at the monthly Sales Pace



Market Time

The average Days On Market(DOM) shows how many days the average Property is on the Market before it sells. An upward trend in DOM tends to indicate a move towards more of a Buyer's market, a downward trend a move towards more of a Seller's market. The DOM for September was 17, up 112.5% from 8 days last month and down -29.2% from 24 days in September of last year. The September 2015 DOM was at its lowest level compared with September of 2014 and 2013.

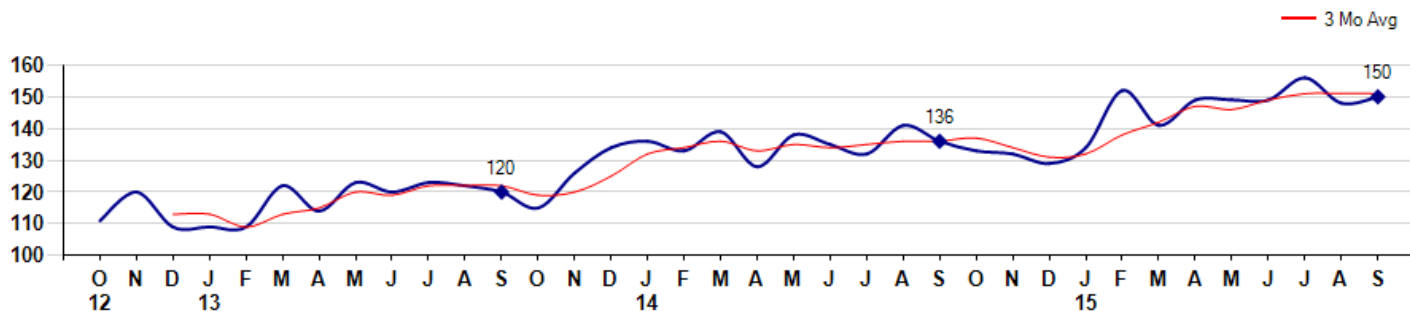
Average Days on Market(Listing to Contract) for properties sold during the month



Selling Price per Square Foot

The Selling Price per Square Foot is a great indicator for the direction of Property values. Since Median Sales Price and Average Sales price can be impacted by the 'mix' of high or low end Properties in the market, the selling price per square foot is a more normalized indicator on the direction of Property values. The September 2015 Selling Price per Square Foot of \$150 was up 1.4% from \$148 last month and up 10.3% from \$136 in September of last year.

Average Selling Price per Square Foot for properties that sold during the month



© 2015 Coldwell Banker Real Estate LLC. All Rights Reserved. Coldwell Banker Residential Brokerage fully supports the principles of the Fair Housing Act and the Equal Opportunity Act. Coldwell Banker Residential Brokerage is operated by a subsidiary of NRT LLC. Coldwell Banker and the Coldwell Banker Logo are registered service marks owned by Coldwell Banker Real Estate LLC.

Based on information from Information and Real Estate Services LLC for the period 10/1/2012 through 9/30/2015. Due to MLS reporting methods and allowable reporting policy, this data is only informational and may not be completely accurate. Therefore, Coldwell Banker Residential Brokerage does not guarantee the data accuracy. Data maintained by the MLS's may not reflect all real estate activity in the market.



Zip Code: 80526



David Timm
 Broker Associate
 970 631 3226
 www.FortCollinsValues.com
 david@davidtimmhomes.com

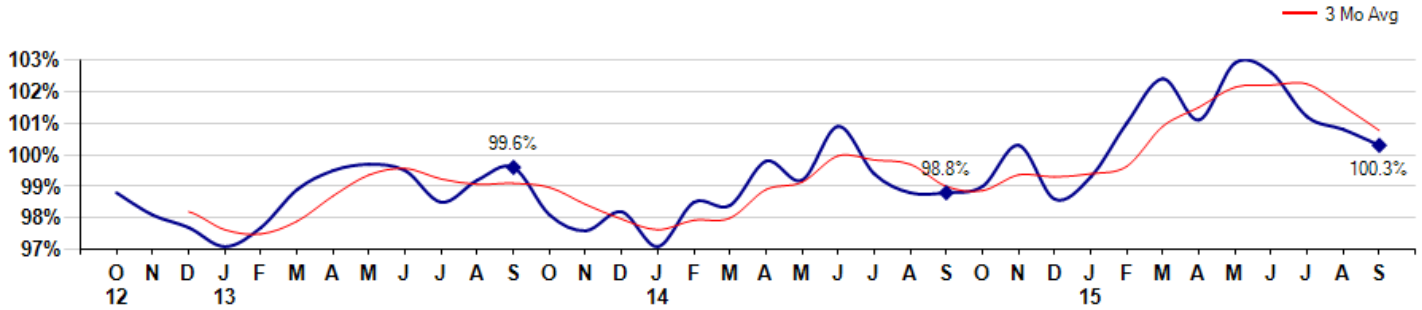


Price Range: \$0 to \$999,999,000 | Properties: Single Family Home

Selling Price vs Listing Price

The Selling Price vs Listing Price reveals the average amount that Sellers are agreeing to come down from their list price. The lower the ratio is below 100% the more of a Buyer's market exists, a ratio at or above 100% indicates more of a Seller's market. The September 2015 Selling Price vs List Price of 100.3% was down from 100.8% last month and up from 98.8% in September of last year.

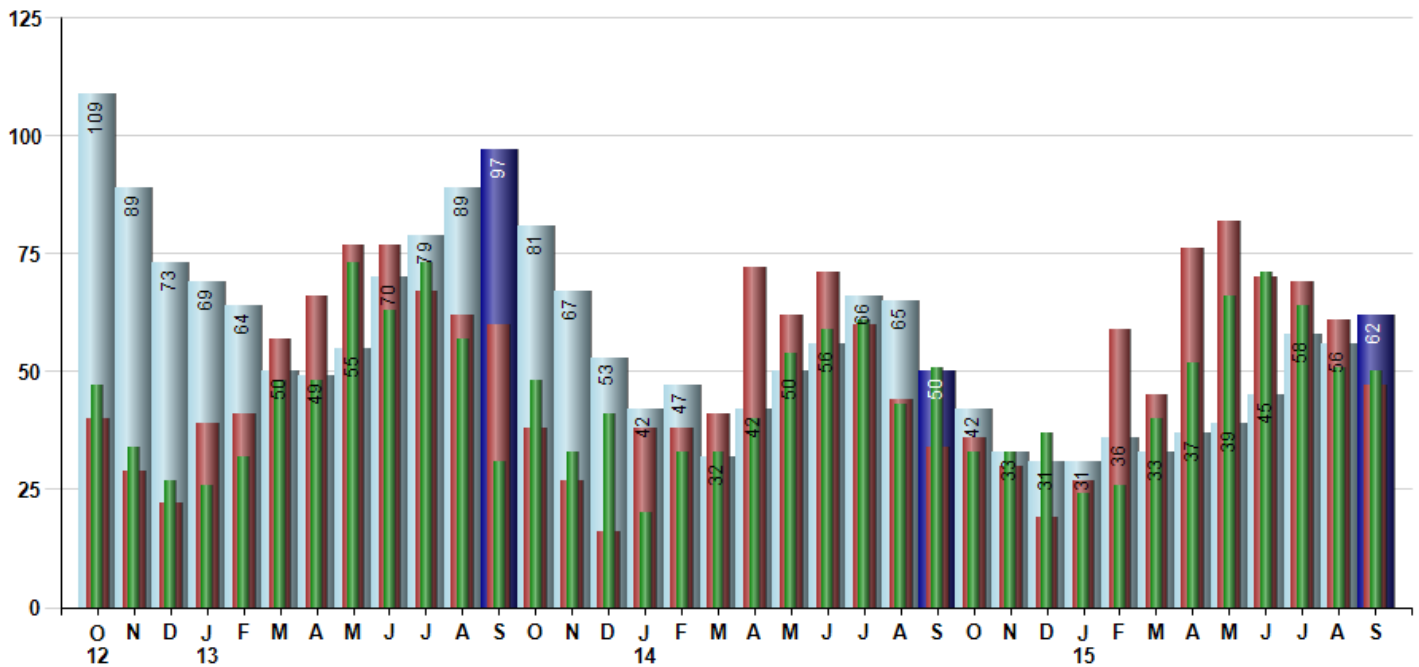
Avg Selling Price divided by Avg Listing Price for sold properties during the month



Inventory / New Listings / Sales

This last view of the market combines monthly inventory of Properties for sale along with New Listings and Sales. The graph shows the basic annual seasonality of the market as well as the relationship between these items. The number of New Listings in September 2015 was 47, down -23.0% from 61 last month and up 38.2% from 34 in September of last year.

Inventory (Light Blue), New Listings (Red), Sold (Green)



© 2015 Coldwell Banker Real Estate LLC. All Rights Reserved. Coldwell Banker Residential Brokerage fully supports the principles of the Fair Housing Act and the Equal Opportunity Act. Coldwell Banker Residential Brokerage is operated by a subsidiary of NRT LLC. Coldwell Banker and the Coldwell Banker Logo are registered service marks owned by Coldwell Banker Real Estate LLC.

Based on information from Information and Real Estate Services LLC for the period 10/1/2012 through 9/30/2015. Due to MLS reporting methods and allowable reporting policy, this data is only informational and may not be completely accurate. Therefore, Coldwell Banker Residential Brokerage does not guarantee the data accuracy. Data maintained by the MLS's may not reflect all real estate activity in the market.



